

EXCELLENCE UNDERWATER



www.Seatrepid.com

Triton XLS 150 Horsepower Vehicle



The Triton XLS is one of the leading vehicles in the industry and widely used all over the world. This 3000 meter rated vehicle can deliver the Tooling, Performance and deepwater capabilities as required in any part of the world. This vehicle is reliable and easily maintained; the ROV provides a 150 hp, high-thrust, Top Hat deployed that is designed to accommodate underwater intervention tasks in the oil and gas industry.

Triton® XLS 50 150 HP 3000 MSW Heavy Workclass ROV System TECHNICAL SPECIFICATIONS

- Dimensions / Motion
- Depth Rating 10,000 fsw (3050 msw)
- Weight in Air 9,800 lb (4.4 tones)
- Length including manipulator mount 120 in (3,050mm)
- Width 70 in (1,780mm).
- Height 78 in (1,930mm)
- Forward Speed 3 knots
- Lateral Speed 2 knots
- Reserve Payload 250 Kg.
- Turning Rate 40 deg. per second.
- Auto Heading Control Automatic to +/- 2.0 degree
- Pitch and Roll Control +/- 5.0 degrees.
- Depth Control Automatic to +/- 6.0 inches.
- Altitude Control Automatic to +/- 6.0 inches.
- Frame Material 6061-T6, uncoated, sandblasted to uniform finish with material.

The ROV frame is manufactured from materials suitable for saltwater submersion. The design configuration ensures that component placement allows ready access to maintenance and interconnect points, specifically electrical connectors, hydraulic connections/adjustments and filters. Cathodic protection is provided by the placement of anodes as required. The open frame concept allows resident ROV components to be located for easy access while retaining a large open volume for mounting of additional ancillary components. The open available volume within the framework is XLS Frame Load Test approximately 20-cubic feet with a lower frame mounting area of 9-square foot available. All weldments are in accordance with ASME Section IX, 1989 Code Requirements. The frame design maximizes the available space for the placement of third party components not included in this specification or normally considered part of a "standard" workclass ROV. The Kellums grip attachment point is rated to higher breaking strength than the tether and Kellums grip.



SeaTrepid International, LLC is an underwater engineering organization specializing in applied robotic solutions in support of commercial, public safety, municipal, military and scientific applications.

We are focused on developing effective equipment and techniques for lowering risks to personnel, accomplishing underwater tasks in hazardous environments and bringing results to our customers through "Excellence Underwater."

Trusted by Clients Around the World

Seatrepid is proud to provide our ROV services to some of the most recognized names in the marine, and oil and gas industries.

- BP Americas
- Chevron
- ExxonMobil
- Tetra Applied
- Epic Diving & Marine
- Apache
- Pioneer
- W&T Offshore
- Cal Dive International
- Dominion
- Mariner Energy
- McMoran Oil & Gas
- ERT
- Kiewit Pacific (PG&E)
- USCG Research & Development Center
- US Army 577th Engineer Battalion
- National Undersea Research Center
- NOAA/EPA/The Obriens Group

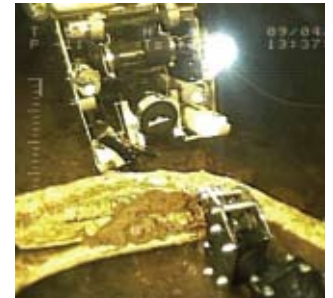


OUR EQUIPMENT

SeaTrepid International, LLC operates a fleet of observation class ROVs, from micro ROVs to submersibles weighing up to 2,000 pounds. The ROV serves as a platform for:



- Specialty tooling (i.e. rotary and linear actuators, grinders, cutters)
- Sonar (Acoustic Lens, Imaging, Multi-beam, 3-D Multi -beam, Side-scan)
- Acoustic positioning
- Light intervention work
- Pipe Tracking
- Flooded member detection
- Mag Particle Inspection
- Sub-bottom Profiler
- UT Thickness
- Wide variety of sensor packages



We also offer:

- A complete line of robotic crawlers for visual and sonar inspection, capable of runs of up to 6,500 feet.
- A complete line of tool, surveillance and downhole cameras for inspections.
- Self-contained command centers to receive and distribute video, establish computer networks and utilize other communication devices required by vessel operators. The command center is custom designed to meet every client's specific goals and objectives.
- Cost effective "Launch and Recovery Systems" (LARS), complete with pneumatic lifting devices and hydraulically adjusted booms
- The most technologically advanced satellite communications for data and IP video streaming.



Max Rover

SeaTrepid added the 2,000-pound Max Rover to its line of specialty ROV's in 2008, allowing the company to offer offshore ROV services in water as deep as 1,000 meters.

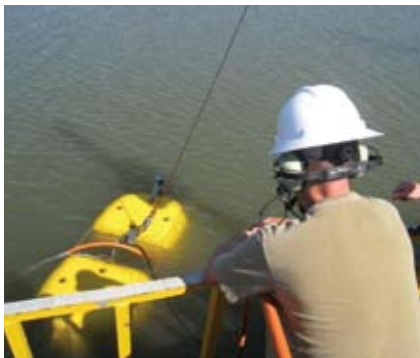
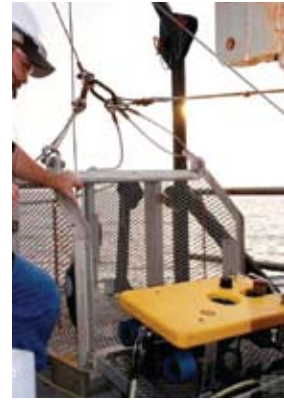
- Light work-class system
- 2 multi-function manipulators
- Payload skid for additional tooling packages



OUR SERVICES

SeaTrepid International, LLC can provide personnel experienced in the following disciplines:

- Enclosed structure penetration
- Well plug, abandonment and decommissioning
- Location and identification of hydrocarbon release
- Drill rig support
- Inspection services through report (platform, dam, tank, ship hull)
- Pipeline surveying
- Bottom obstruction surveying
- 3-D mapping of downed platforms
- Detection & tracking of heavy oil on the sea floor
- Diver support operations
- Streaming IP video
- Port and harbor security
- Interior Pipe Inspection
- Jetting
- ABS UWILD Inspection
- Cavitation cleaning
- Acoustic Pipe Profiling
- Long Distance Pipe Penetration
- Flooded member detection
- Sound Velocity profiling
- Cathodic Potential Readings
- HazMat Spill Response
- Sewer Inspection Services
- Water Works Inspection Services
- Chemical Plant Inspection Services
- First Responder (Public Safety) Services
- High Bandwidth sensor Input i.e. 3-D Multi-beam, High definition cameras, laser scaling



OUR ADVANTAGES

- Portable – Our system is lightweight and can easily be sent to the jobsite by boat or helicopter
- Rapid set-up
- Can operate effectively with very little space requirements
- Proven reliability
- Cost Effective – The use of SeaTrepid ROV's increases our client's productivity and reduces time on location, resulting in significant cost savings
- Reduced risk to personnel
- Safety –SeaTrepid has an outstanding safety record reinforced by a comprehensive safety program. We recognize and understand the challenges of the marine environment and make the safety of our employees and those assisting us on a job the highest priority.

SONAR CAPABILITIES

With Seatrepid International, LLC, you have eyes to see even in the darkest waters. Equipped with a wide array of sonar options, our ROV's can provide a view of underwater equipment or the environment.

MUNICIPAL, UTILITY AND HYDRO-ELECTRIC SERVICES

The safety, efficiency and proven reliability of Seatrepid ROV's make us an ideal choice for municipal, utility, and hydro-electric applications, such as dam and water treatment plant inspections.





EXCELLENCE UNDERWATER

Seatrepid International, LLC

PHYSICAL ADDRESS:

23083 Highway 190 E
Robert, LA 70455

MAILING ADDRESS:

P.O. Box 898
Robert, LA 70455-0898
Telephone: (985) 350-6299
Fax: (985) 520-0002

Email: info@seatrepid.com or sales@seatrepid.com

Web: www.Seatrepid.com

Our Facility

Seatrepid International, LLC teams are literally world travelers, spanning the globe from the Gulf of Mexico to Scotland and Trinidad to deliver robotics services to our diversified client list. But work doesn't end back at the office.

Seatrepid's Louisiana headquarters features a purpose-built, technologically advanced ROV service, support, training and testing facility that allows us to deliver highly trained ROV pilots and technicians as well as ROVs that are maintained and serviced to the highest standards.

Our facility includes a test pool (30'x40'x16') to provide service and support for all classes of ROVs up to and including complete work class systems, as well as a state-of-the-art electronics and hydraulics workshop, and a comprehensive computer-based training center. We are able to keep a large and diverse inventory of ROV's in stock for quick and easy deployment to your job site.



Seatrepid International, LLC

**PHYSICAL ADDRESS:
23083 Highway 190 E
Robert, LA 70455**

**MAILING ADDRESS:
P.O. Box 898
Robert, LA 70455-0898**

**Telephone: (985) 350-6299
Fax: (985) 520-0002**

Email: info@seatrepid.com or sales@seatrepid.com

Web: www.Seatrepid.com